

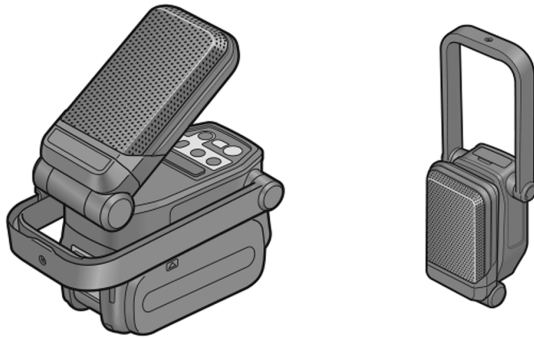
Service Manual

WIRELESS SPEAKER



Model No. **EY37C5**

Europe
Oceania



WARNING

This service information is designed for experienced repair technicians only and is not designed for use by the general public. It does not contain warnings or cautions to advise non-technical individuals of potential dangers in attempting to service a product. Products powered by electricity should be serviced or repaired only by experienced professional technicians. Any attempt to service or repair the product or products dealt with in this service information by anyone else could result in serious injury or death.

IMPORTANT SAFETY NOTICE


There are special components used in this equipment which are important for safety. These parts are marked by  in the Schematic Diagrams, Circuit Board Diagrams, Exploded Views and Replacement Parts List. It is essential that these critical parts should be replaced with manufacturer's specified parts to prevent shock, fire or other hazards. Do not modify the original design without permission of manufacturer.

TABLE OF CONTENTS

	PAGE
1 Warning-----	2
2 Specifications -----	2
3 Troubleshooting Guide-----	3
4 Disassembly and Assembly Instructions -----	4
5 Exploded View and Replacement Parts List -----	8

Panasonic

© Panasonic Corporation 2019. All rights reserved.
Unauthorized copying and distribution is a violation of law.


1 Warning

Caution:

- Pb free solder has a higher melting point than standard solder; Typically the melting point is 50 - 70°F (30 - 40°C) higher. Please use a soldering iron with temperature control and adjust it to 750 ± 20°F (400 ± 10°C). In case of using high temperature soldering iron, please be careful not to heat too long.
- Pb free solder will tend to splash when heated too high (about 1100°F / 600°C).

2 Specifications

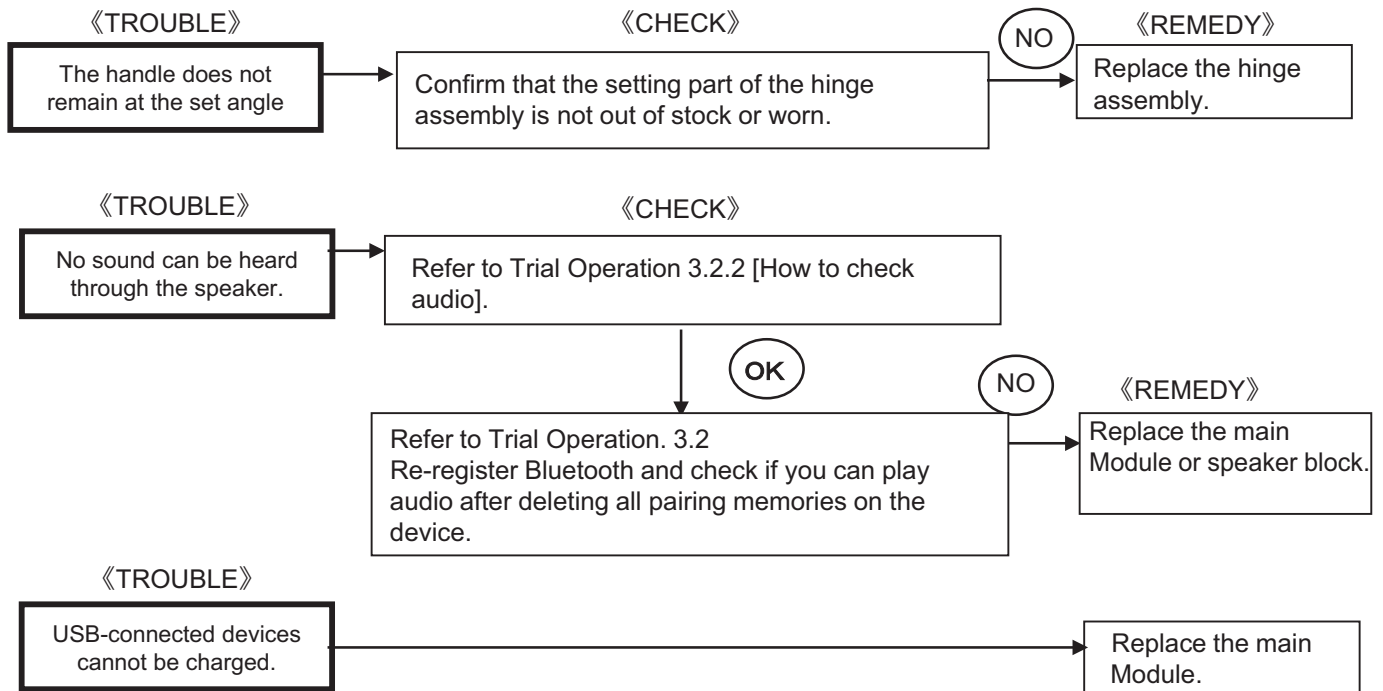
[Main unit]

Model No.	EY37C5			
Voltage	DC 14.4 V / DC 18 V / DC 21.6 V			
 Bluetooth®	Version: Ver. 4.2			
	Transmission power: Bluetooth® specification power Class 2 (2.5 mW)			
	Compatible profile: A2DP / AVRCP			
	Number of pairing: 8			
	Transmission range: Estimated range ca 10 m			
Output Power	5 W			
USB socket	2 × type A USB (DC 5 V) sockets for total 2 A output			
Weight	420 g (main unit only)			
Dimension (W × H × D)	162 mm × 70 mm × 99 mm (with handle flat to body)			
Battery pack	Li-ion battery pack			
	EY9L45	EY9L47	EY9L51	EY9L52
	EY9L53	EY9L54	EY9L62	

3 Troubleshooting Guide

3.1. Troubleshooting Guide

* Check the battery voltage before the inspection.



3.2. Trial Operation (after checking Troubleshooting Guide)

IMPORTANT NOTICE:

Delete all pairing memories after repairing.

[How to delete all pairing memories]

Push the Volume+ - button and Switch at the same time while EY37C5 is turned OFF then you'll hear a beep after 5 seconds → All pairing memories are deleted.

3.2.1. Assembly

- Confirm that there is no biting of lead wires and no gaps between housing.
- Confirm all screws are tightened firmly.

3.2.2. Operation

- Play audio and check sound quality and volume control.

[How to check audio]

Turn ON Bluetooth from smartphone setting while EY37C5 is turned OFF → Press and hold EY37C5 Switch → Confirm that you can play the music on the device side.

- Connect the USB charging cable from the market and the USB device to the right/left USB terminal. Press the USB power supply button and check if it starts charging.

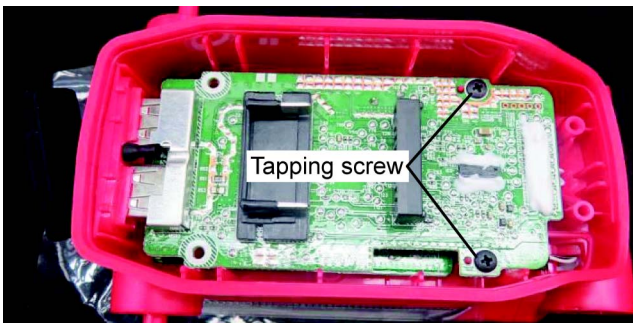
4 Disassembly and Assembly Instructions

*To assemble the tool, start with 15 and proceed to 1.

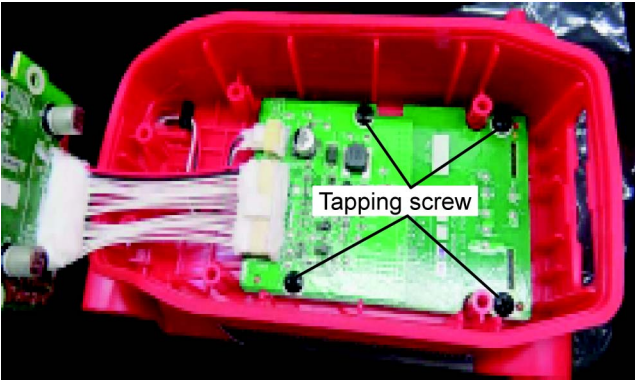
1. Remove 4 tapping screws.



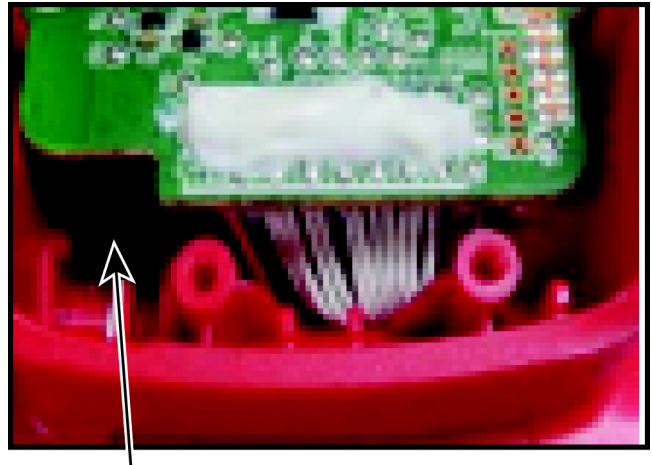
2. Remove 2 tapping screws from main module.



3. Remove 4 tapping screws from BT module.



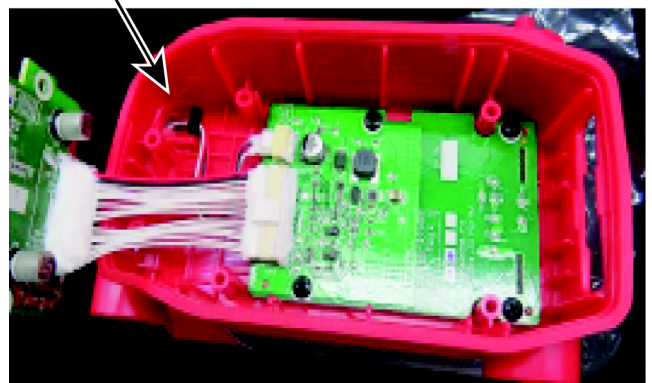
4. Remove 4-pin connector from the main module.



Note: (When Assembling)
Pay attention to avoid pinching of lead wires

5. Remove the heat resistant tape from the main module.

Heat resistant tape



6. Remove the hinge cover.
7. Remove 2 screws from the hinge assembly.
8. Remove the parts inside the hinge assembly.



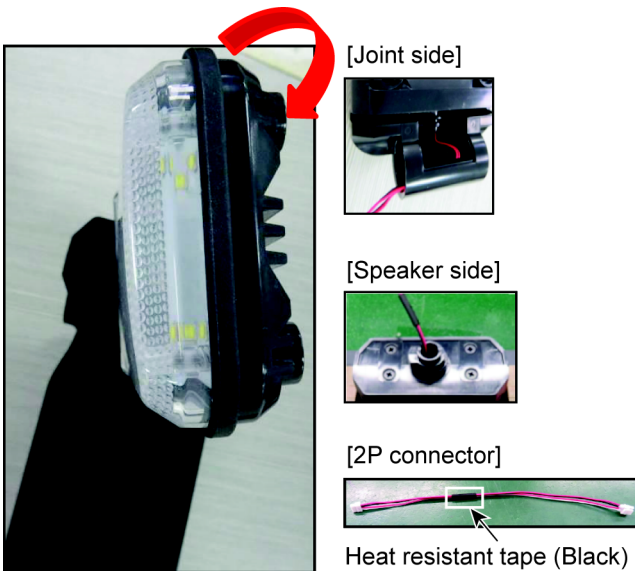
9. Remove Speaker assembly. Pay attention not to snap 2P lead wire.

10. Rotate joint parts to remove 4 screws.



Lead wire

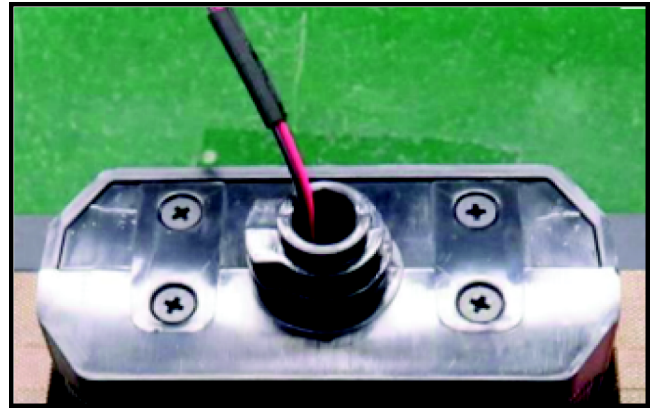
11. Rotate the LED unit to remove the joint.



Note:

The condition of lead wires after disassembly.

12. Remove 10 tapping screws.



13. Remove the rear cover.

14. Remove the protective rubber.



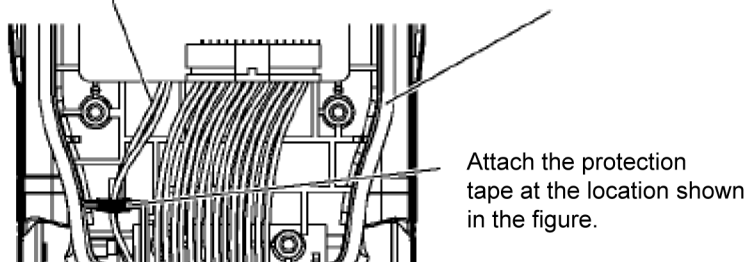
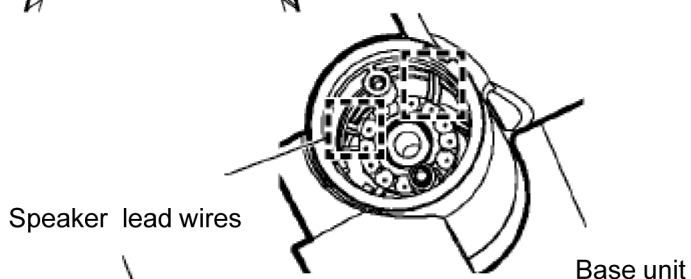
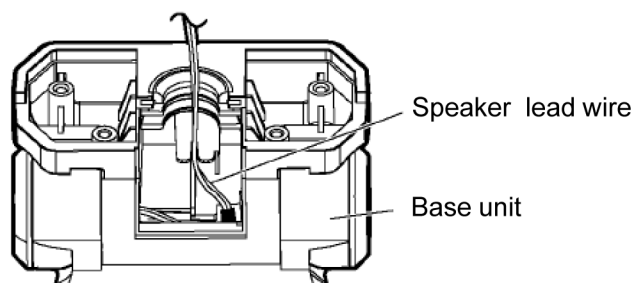
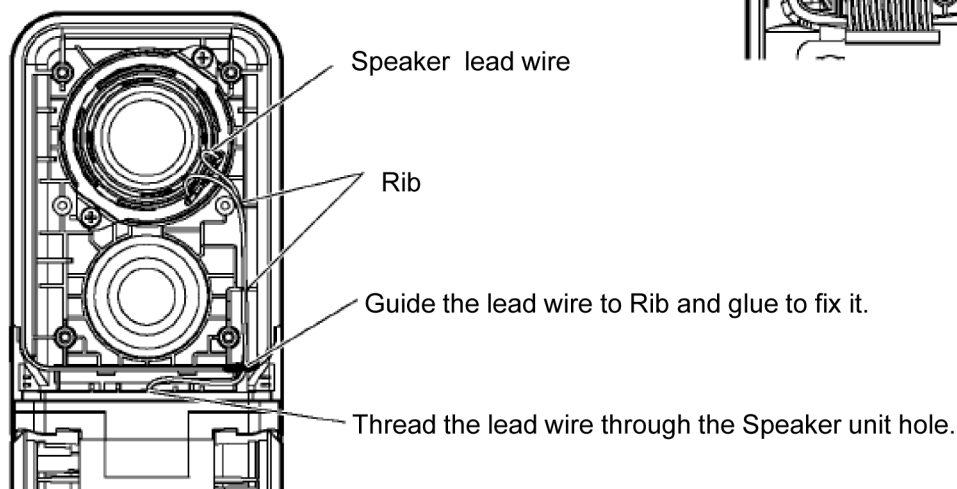
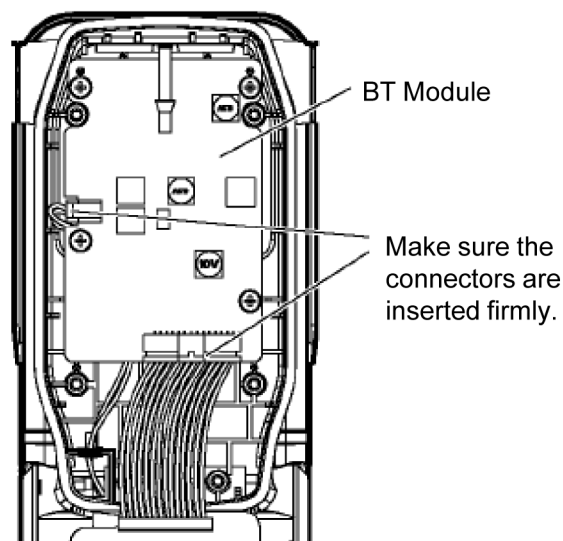
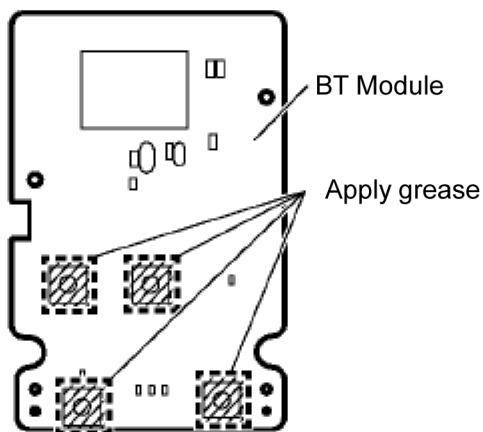
Note:

If replacing the speaker, fixed the lead wire with cemedine.

15. Remove and disassemble the handle cover using a precision screwdriver.

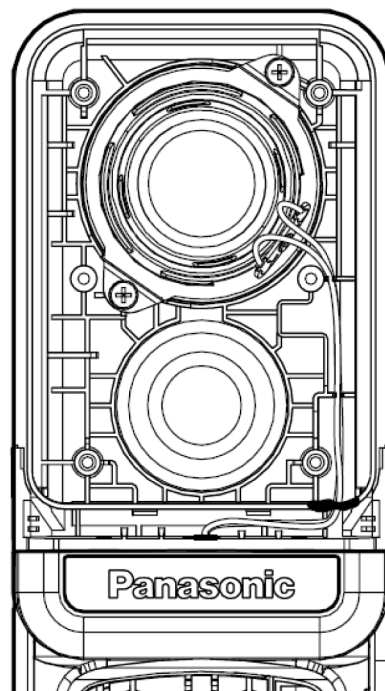
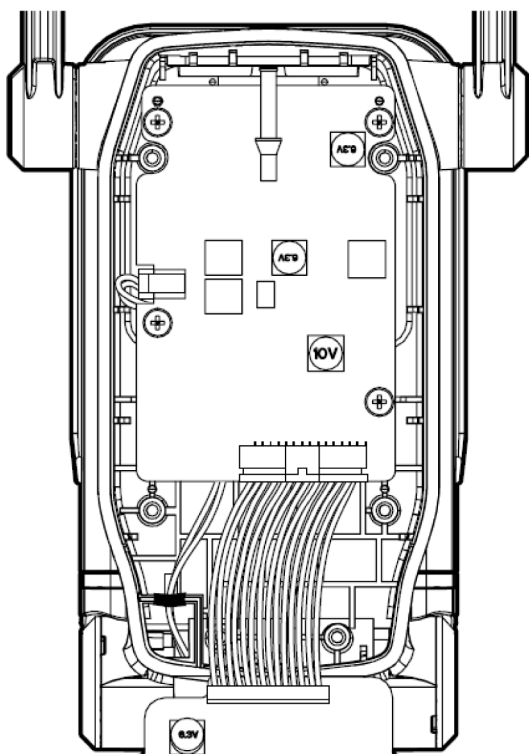


Wiring and Assembly Points



Route the lead wires like the above figure.

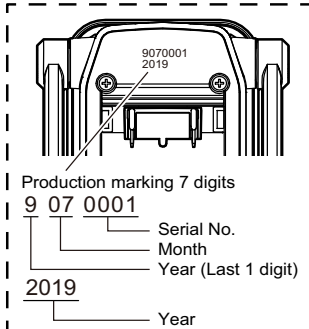
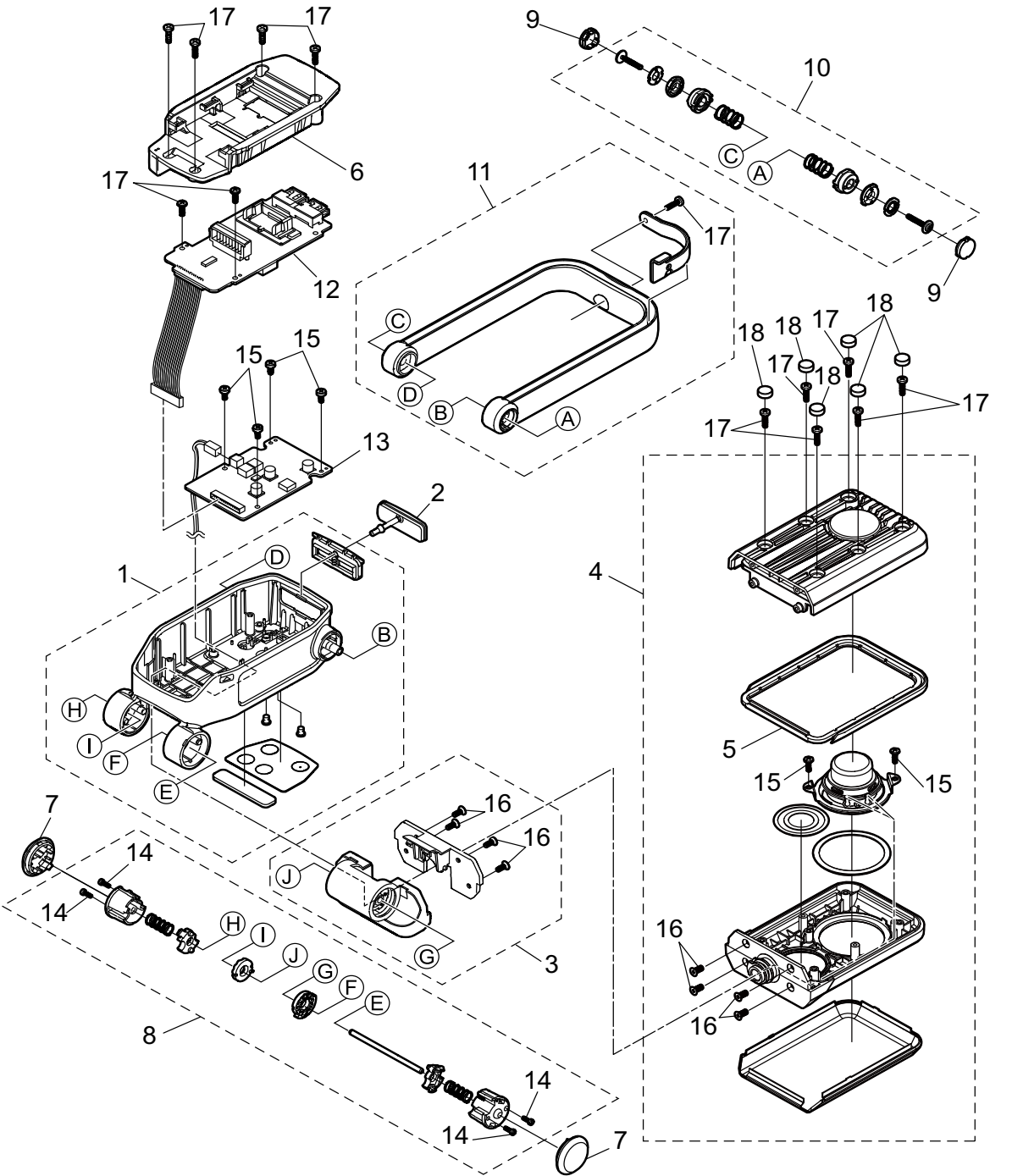
【Overall view】



*Route the lead wires like the above figure

5 Exploded View and Replacement Parts List

5.1. PARTS LOCATION



5.2. REPLACEMENT PARTS LIST

Model No.EY37C5

Ref. No.	Part No.	Part Name & Description	Q'ty	Remarks
1	WEY37C5K3088	BASE UNIT	1	
2	WEY37C4L3127	USB RUBBER COVER	1	
3	WEY37C5K1447	JOINT ASSEMBLY	1	
4	WEY37C5K3098	SPEAKER UNIT	1	
5	WEY37C4L0217	RING RUBBER	1	
6	WEY37C4L3177	COVER BASE	1	
7	WEY37C4K0877	HINGE COVER	2	(φ25)
8	WEY37C4L1337	HINGE ASSEMBLY	1	
9	WEY37C4L0877	HINGE COVER	2	(φ13)
10	WEY37C4L1357	HINGE ASSEMBLY FOR HANDLE	1	
11	WEY37C4L3217	HANDLE UNIT	1	
12	WEY37C5L2107	MAIN MODULE	1	
13	WEY37C5L2207	BT MODULE	1	
14	WEY37C4B6017	TAPPING SCREW	4	(2.6*8), (5PCS/PK)
15	WEY37C4B6027	TAPPING SCREW	4	(2.6*6), (5PCS/PK)
16	WEY37C4B6037	SELF TAPPING SCREW	8	(2.6*6), (5PCS/PK)
17	WEY37C4B6047	TAPPING SCREW	12	(2.6*10), (5PCS/PK)
18	WEY37C4B7107	RUBBER FOOT	4	(1sheet/PK)
-	WEY37C5K8108	OPERATING INSTRUCTIONS	1	
-	WEY003W8957	GREASE (PERMALUB)	1	
-	WEYFLA4AK777	HEAT RESISTANT TAPE	1	(30m/ROLL)
-	WEY7880L7877	CEMEDINE	1	